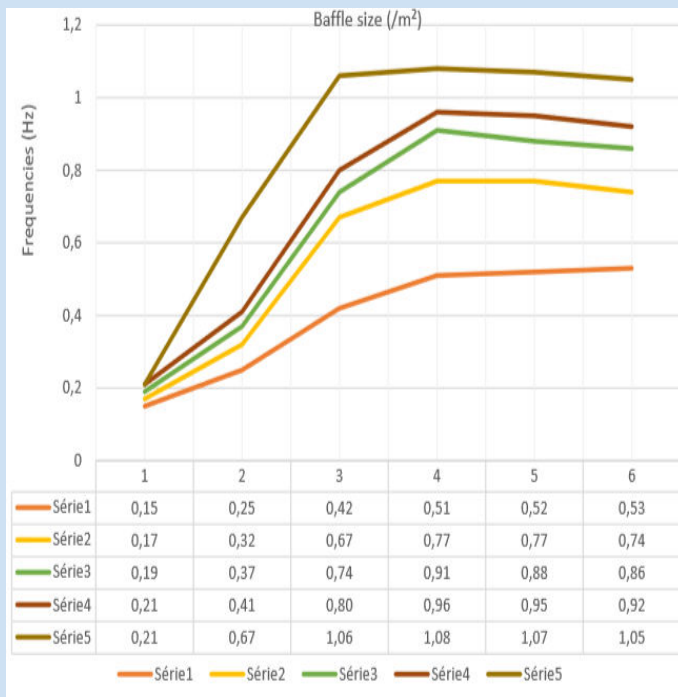


## ACOUSTIC SPECIFICATIONS

Type	Description				
	Thick (mm)	Width (m)	Length (m)	Density (Kg/m <sup>3</sup> )	Value Aw=
PMA Batt 0.044 W/mK	45	0.6	1.2	45	0.95 42dB
EKO Baffle Batt 0.044W/mK	45	0.6 & 0.3	1.2	45	
PM+ Batt 0.039W/mK	50	0.6	1.2	25	
RMA Roll	20	1.2	14	45	0.95
		0.6	1.2		20dB

## EXCELLENT ACOUSTIC PERFORMANCE



## CASE STUDIES

Acoustic products used by:

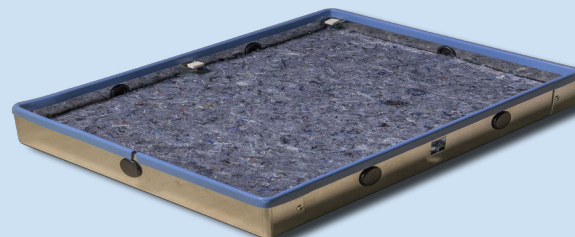
- NBC news for their studios at Olympic Games 2012, 2016 and reused at Sochi Games 2014 to avoid landfill



- Professional and home music studios, speakers and subwoofers
- Van/campervan conversions



- Panel UK screen systems
- Amina UK the world's leading designer and manufacturer of Invisible Speaker System



# InnoTHERM<sup>®</sup>

Recycled Cotton/Denim Insulation



# mētisse<sup>®</sup>

## Sustainable innovation



## COMPOSITION

-85% recycled cotton

-15% polyester

Treatment with fire proofing, antifungal and antibacterial (1%) additives

## ABOUT RECOVERY INSULATION & LE RELAIS

As a social enterprise we stand apart from other insulation companies in donating a proportion of income to the charity [www.solar-active.com](http://www.solar-active.com).

The charity conducts renewable and energy efficiency activities for schools and the general public.

We have manufactured by the social enterprise Le Relais a low carbon recycled cotton insulation made from unwanted garments. It is called Metisse and sold in UK under Inno-therm brand. Three pairs of jeans are required to produce an insulation batt (0.6m X 1.2m X 100mm).



## TECHNICAL INFORMATION

- UK and European approval standards
- Lamda values 0.039 WmK
- Coefficient of sound absorption (=0.95) and acoustic fading (42dB)
- Excellent performance in conditions of high humidity. It behaves as a hydro regulator
- Fire resistance is Euroclass E and B (behind plaster board)
- Resistance to growth of mould fungus and clothes moth
- Low Carbon and Recycled

# InnoTHERM®

## Recycled Cotton/Denim Insulation



PLEASE TOUCH



[www.inno-therm.com](http://www.inno-therm.com)

Tel : 0114 258 7639

Mobile : 07968 844891

[info@inno-therm.com](mailto:info@inno-therm.com)

